

Gtech

Branch cutter

Model number: BC3.0

OPERATING MANUAL

Gtech BC3.0 Cordless Branch Cutter

Use in conjunction with the Gtech HT3.0 Cordless Hedge Trimmer. Please follow the safety instruction that came with the original product.



Wear protective gloves when handling, using or cleaning the blade.

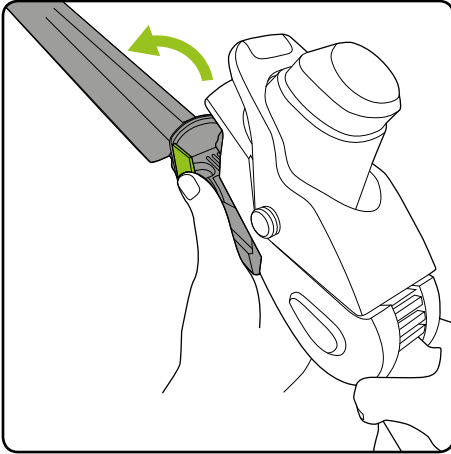


To reduce risk of injury ensure that protective blade guard is fitted when the branch cutter is not in use, being transported, handled or stored.

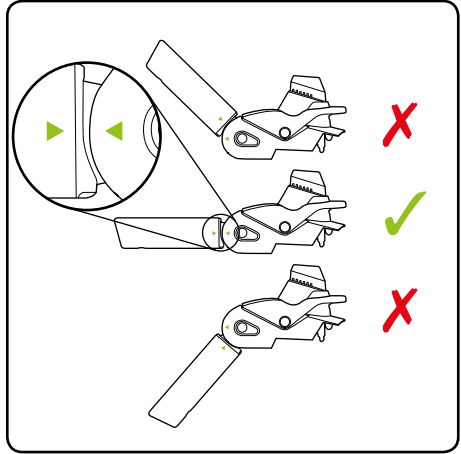


WARNING: To reduce the risk of personal injury always wear eye protection. Personal protective equipment such as sturdy gloves and non-slip shoes are recommended.

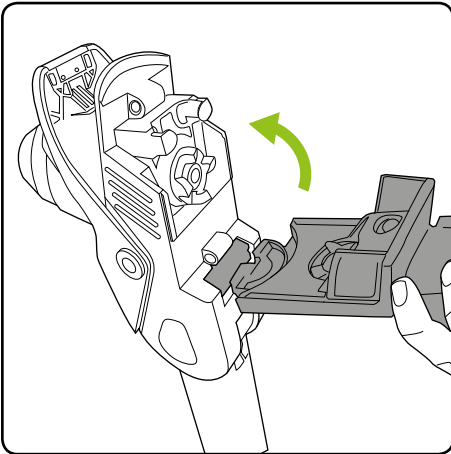
Using your branch cutter



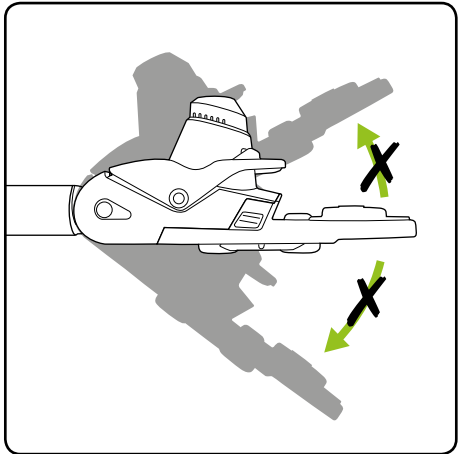
Remove the hedge trimmer blade (see instructions that came with the tool).



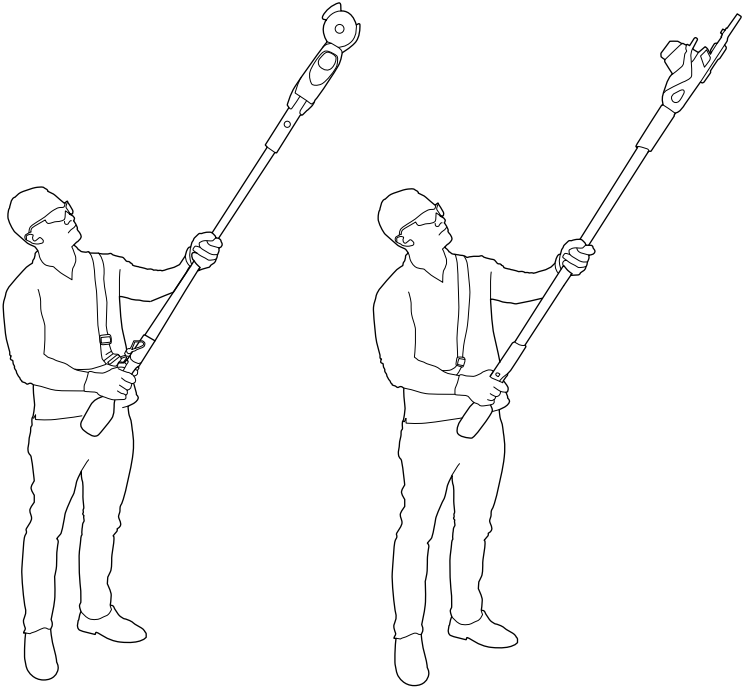
The blade will not attach unless the body is in line with the head and the arrows align.



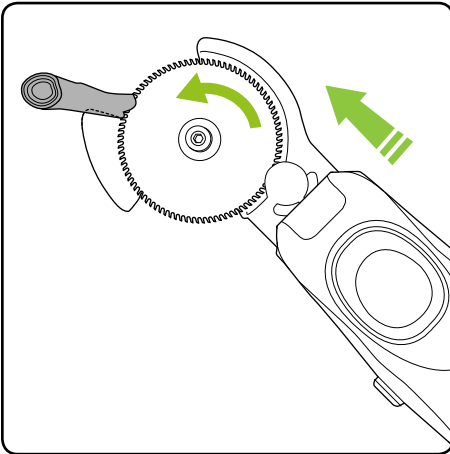
Connect branch cutter to head. It will snap into place just like the hedge trimmer blade.



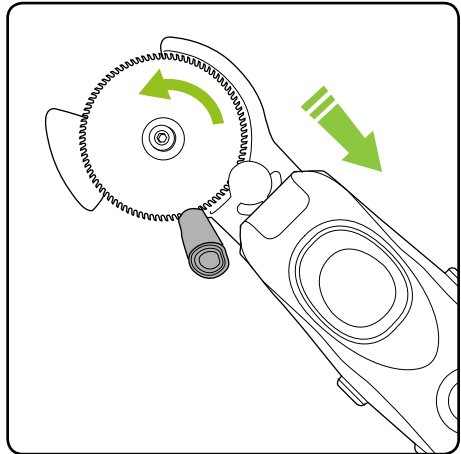
The branch cutter is not intended to pivot and must be used straight.



The branch cutter needs to be straight for assembly and also in operation.

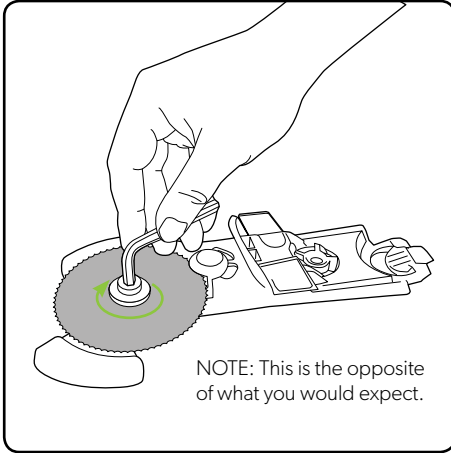


When cutting branches with front, branch will rest on support as indicated.

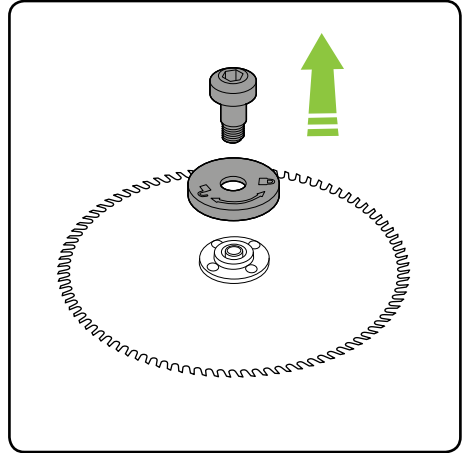


When cutting with a pulling motion the branch will rest on body of the cutter head.

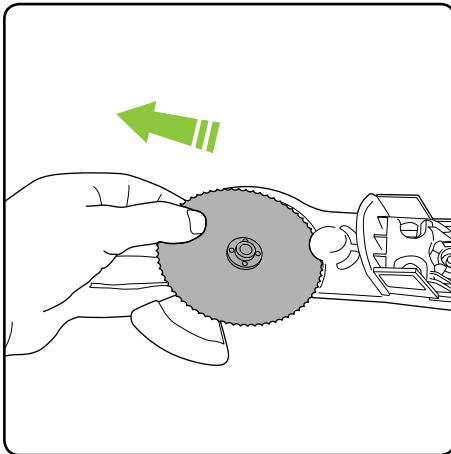
Replacing the blade



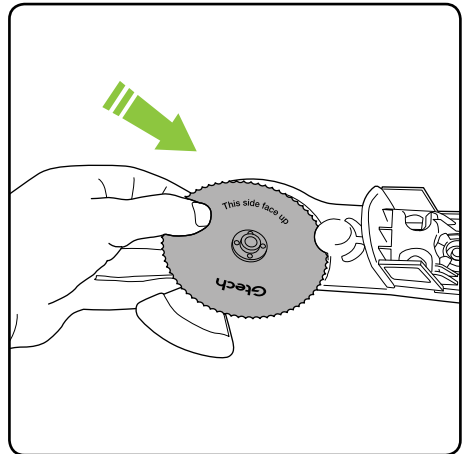
Remove the attachment from the product. Using 6mm allen key, unscrew the bolt in the hub in a **clockwise** direction.



Remove the screw and the hub.

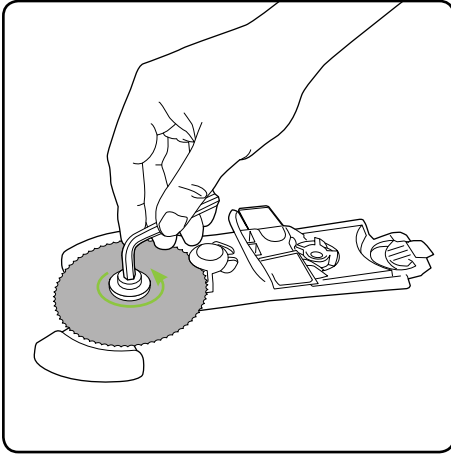


Lift the old blade out taking care of the teeth on the blade.

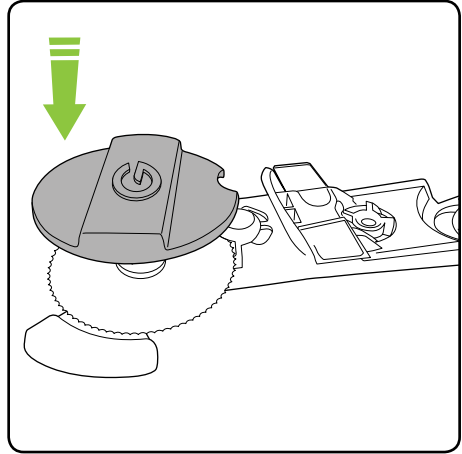


Put new blade in. The upper face of the blade is marked clearly on the blade.

Replacing the blade (contd.)



Replace the bolt and hub, tighten by turning **anticlockwise**.



The blade cover should be used when the branch cutter is not in use.

Gtech

Grey Technology Limited

Brindley Road, Warndon, Worcester WR4 9FB

email: support@gtech.co.uk

telephone: 01905 345891

www.gtech.co.uk