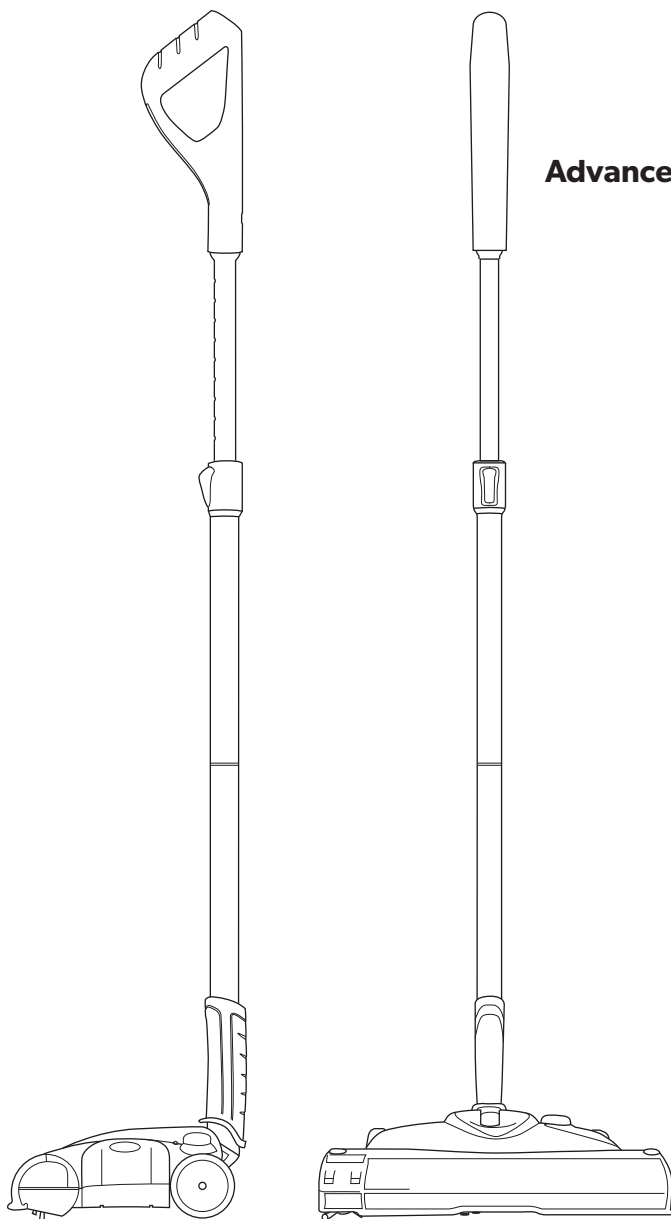


Advanced Power Sweeper

Model number:

SW02



OPERATING MANUAL

IMPORTANT SAFEGUARDS:



**IMPORTANT: READ ALL INSTRUCTIONS BEFORE USE.
RETAIN INSTRUCTIONS FOR FUTURE REFERENCE.**



Do not use in rain or leave outdoors whilst raining.



WARNING: Basic safety precautions should always be observed when using an electrical appliance, including the following to reduce the risk of fire, electrical shock, or injury:

Personal Safety:

- Store indoors in a dry place out of the reach of children.
- Always use responsibly. This appliance can be used by children aged from 8 years and above and persons with reduced physical, sensory or mental capabilities or lack of experience and knowledge if they have been given supervision or instruction concerning use of the appliance in a safe way and understand the hazards involved.
- Don't let children play with the appliance; supervise children using or maintaining the appliance.
- Use only manufacturer's recommended attachments as described in this manual; misuse or use of any accessory or attachment other than those recommended, may present a risk of personal injury.
- Take extra care when cleaning stairs.
- Keep the appliance and accessories away from hot surfaces.
- Particularly keep hair away from openings and moving parts.

Electrical safety:

- Only use batteries and chargers supplied by Gtech.
- Never modify the charger in any way.
- The charger must only be used for UK mains supply.

A charger that is suitable for one type of battery pack may create a risk of fire when used with another battery pack; never use the charger with another appliance or attempt to charge this

product with another charger.

- Before use, check the charger cord for signs of damage or ageing. A damaged or entangled charger cord increases the risk of fire and electric shock.
- Do not abuse the charger cord.
- Never carry the charger by the cord.
- Do not pull the cord to disconnect from a socket; grasp the plug and pull to disconnect.
- Don't wrap the cord around the charger when storing.
- Keep the charger cord away from hot surfaces and sharp edges.
- The supply cord cannot be replaced. If the cord is damaged the charger should be discarded and replaced.
- Do not handle the charger or the appliance with wet hands.
- Do not store or charge the appliance outdoors.
- Unplug the charger before removing the battery, cleaning or maintaining the appliance.

Battery safety:

- This appliance includes Li-ion batteries; **do not incinerate batteries or expose to high temperatures**, as they may explode.
- Liquid ejected from the battery may cause irritation or burns.
- In an emergency situation contact professional help immediately.
- Leaks from the battery cells can occur under extreme conditions. Do not touch any liquid that leaks from the battery. If the liquid gets on your skin

wash immediately with soap and water. If the liquid gets into your eyes, flush them immediately with clean water for a minimum of 10 minutes and seek medical attention. Use gloves to dispose of the battery immediately in accordance with local regulations.

- Shorting the battery terminals may cause burns or fire.
- Store battery away from metal objects that could connect the terminals.
- Store the battery away from any liquids and chemicals that may damage the battery and cause a risk of fire.
- Store the battery in clean, dry conditions, within a recommended temperature range of 0 - 25°C
- Do not store the battery in areas of high temperature above 25°C. Do not store near a source of heat or where exposed to direct sunlight.
- When you dispose of the appliance remove the battery and dispose of the battery safely in accordance with local regulations.

Service:

- Before using the appliance and after any impact, check for signs of wear or damage and repair as necessary.
- Do not use the appliance if any part is damaged or defective.
- Repairs should be carried out by a service agent or a suitably qualified person in accordance with relevant safety regulations. Repairs by unqualified persons could be dangerous.
- Never modify the appliance in any way as this may increase the risk of personal injury.
- Only use replacement parts or accessories provided or recommended by Gtech.

Intended use:

- This appliance has been designed for domestic dry sweeping only.
- Do not pick up liquids or use on wet surfaces.

- Do not pick up anything that is flammable, burning or smoking.
- Use only as described in this manual.
- Don't use on concrete, tarmacadam or other rough surfaces.
- The brush bar may damage certain floor surfaces. Before cleaning flooring, rugs or carpets, check the flooring manufacturer's recommended cleaning instructions.
- The product may damage delicate fabrics or upholstery. Care should be taken on loose-weave carpets and coverings or where there are loose threads. It is advised to test on an inconspicuous area first before use.
- The product has been designed to clean a wide variety of floor surfaces without the need to change settings. However some surfaces such as delicate loose-pile rugs or carpets, tasselled rug edges or damaged carpets with exposed threads are not suitable for cleaning with a rotary brush.
- The sweeper has a constantly rotating brush bar. Never leave the cleaning head in one spot for an extended period of time as this may damage the floor surface.
- Particularly for hard flooring, before using the sweeper check the area being cleaned is free of any hard debris or objects that could damage the flooring if caught underneath the product, and that the underside of the product is free from foreign objects that could mark the surface.

WARNING:

- **Do not use water, solvents, or polishes to clean the outside of the appliance; wipe clean with a dry cloth.**
- **Never immerse the unit in water and do not clean in a dish washer.**

FOR HOUSEHOLD USE ONLY



Thank you for choosing Gtech

"Welcome to the Gtech family. I started Gtech to create sensible, easy to use products that do a great job, and hope you get many years of trouble-free performance from your new product."

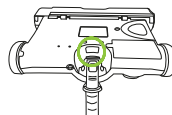
Nick Grey – Inventor, owner of Gtech

Make a note of your product serial number code for future reference. You can find this on the underside of item

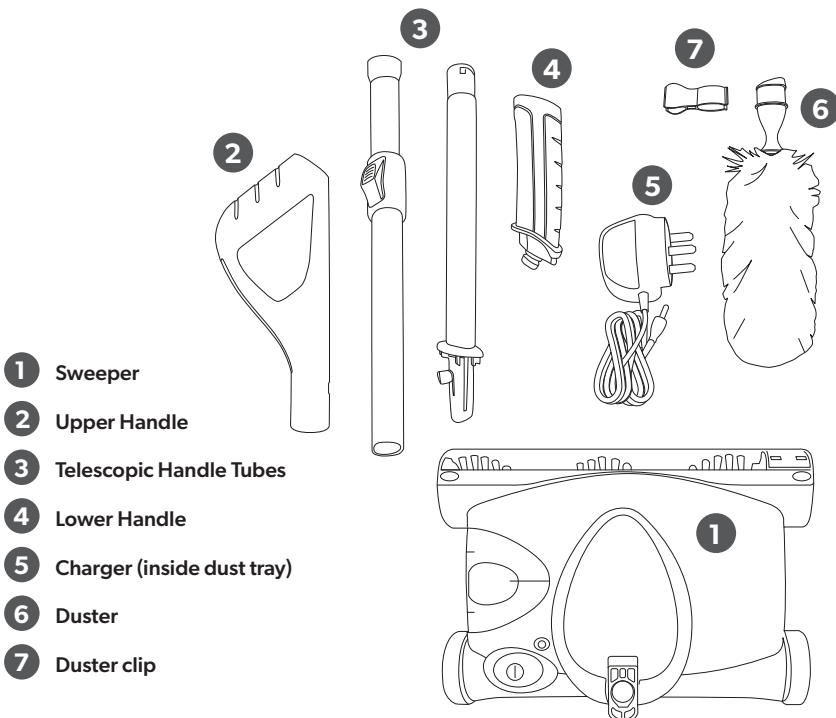
-- -- -- -- ~
-- -- -- -- ~
-- -- -- -- ~
-- ~ -- -- --



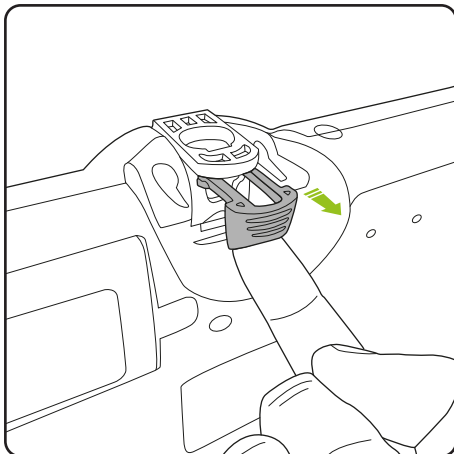
X-XX-XXX-
XXXXX-
WYYY-
00-000000



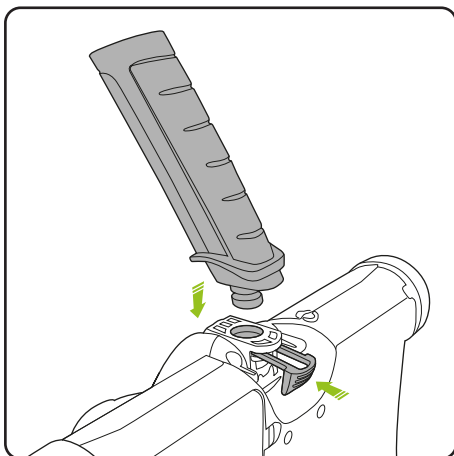
What's in the box



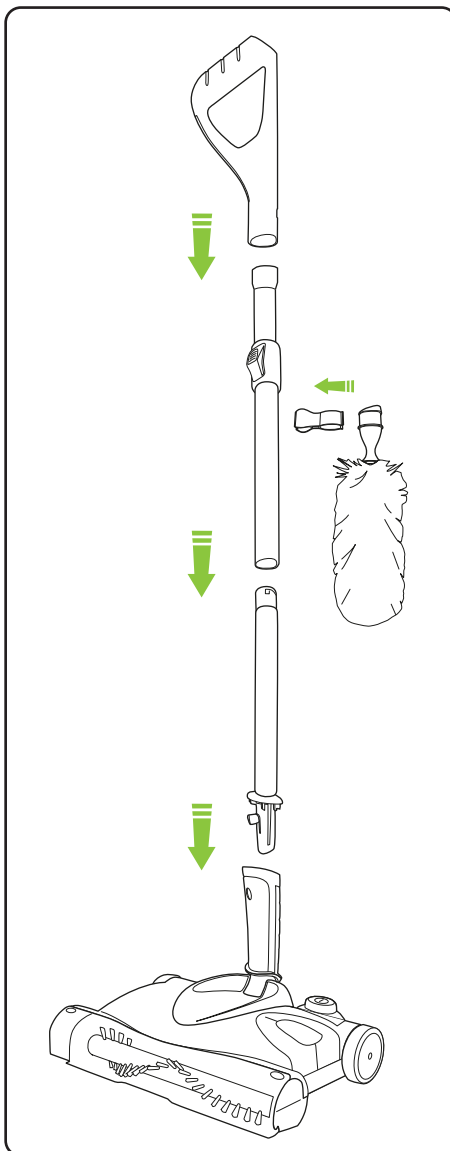
Assembly



To assemble the lower handle
Pull out the locking clip.

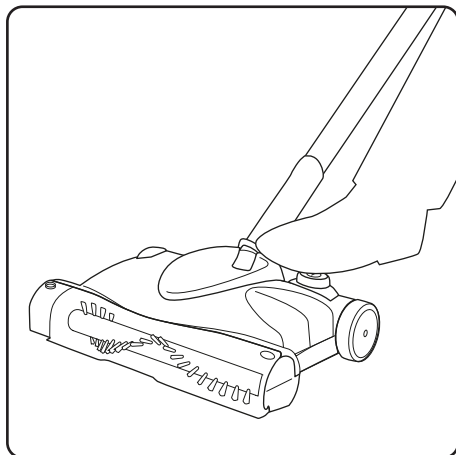


Place the lower handle into the socket.
Push the locking clip back into place.
Push handle forward.



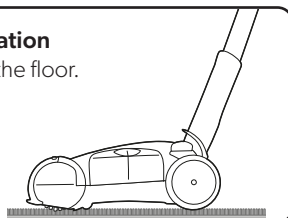
The three parts of the telescopic handle also
click into place. The duster can be clipped
onto the back of the handle.

Operation



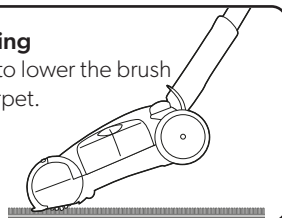
Normal operation

Push flat over the floor.



Deeper cleaning

Lift the handle to lower the brush bar into the carpet.

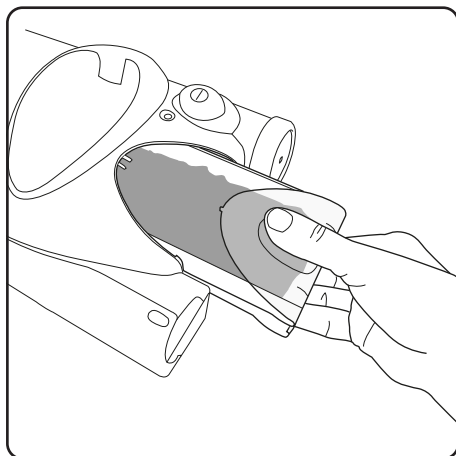


Pull back the handle and press the “on” button with your foot.

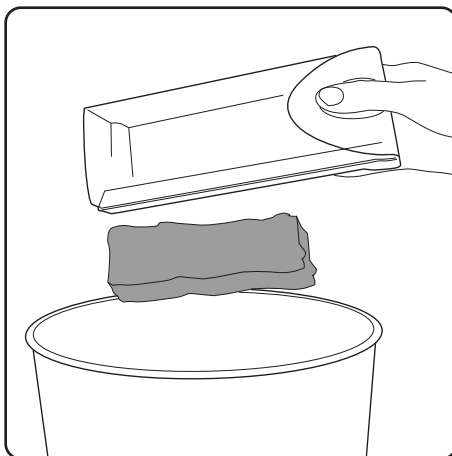
When running, the light shows green for a full charge, orange for 20% charge and red for 10%.

When the sweeper needs recharging the light will flash red and the sweeper will stop.

Emptying the bin

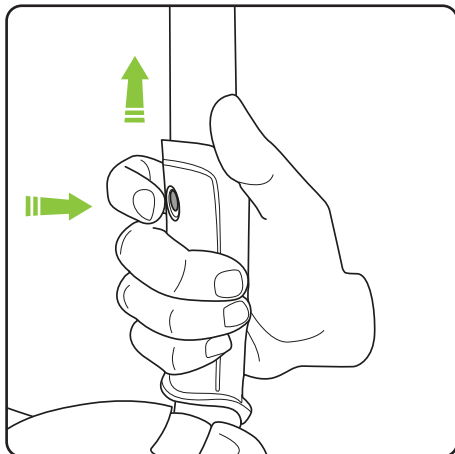


Remove the dust tray by pinching the window slightly, and pulling out.

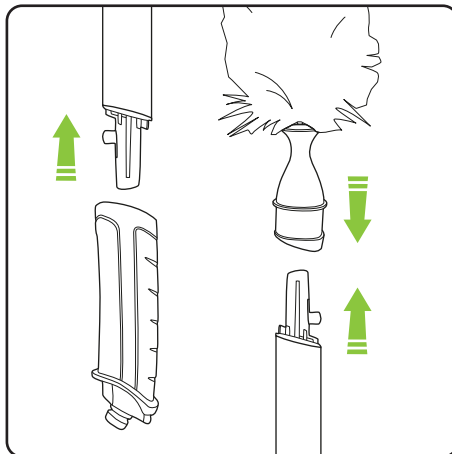


Tip the dirt into the bin. If you need to you can wipe the tray clean with a dry cloth.

Removing telescopic handle and using duster

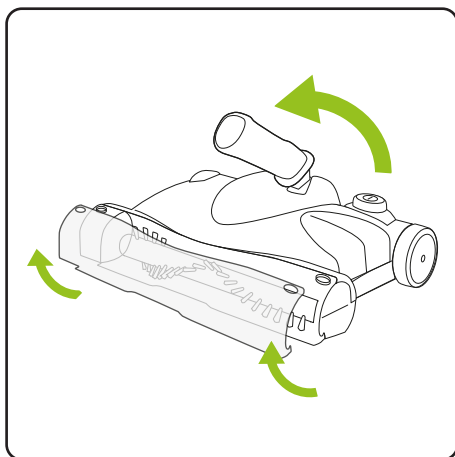


Remove the telescopic handle by pressing the button at the front of the lower handle and pulling the tube out.

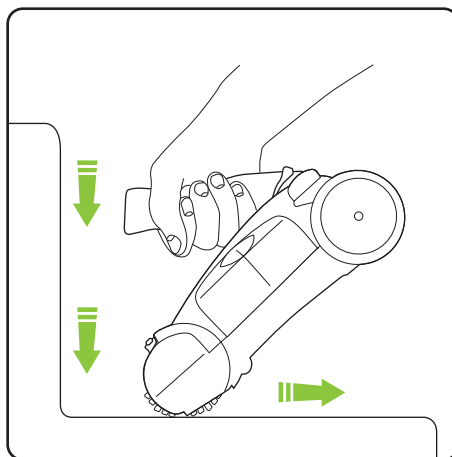


The telescopic handle can now be attached to the duster.

Handheld use and stair cleaning

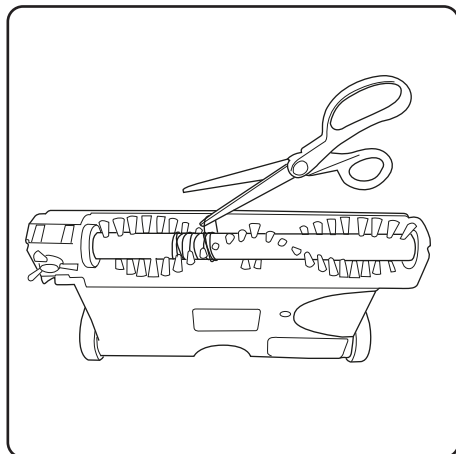


Remove the visor by unclipping the bottom outer edges at the same time then lifting off. Push lower handle fully forward.



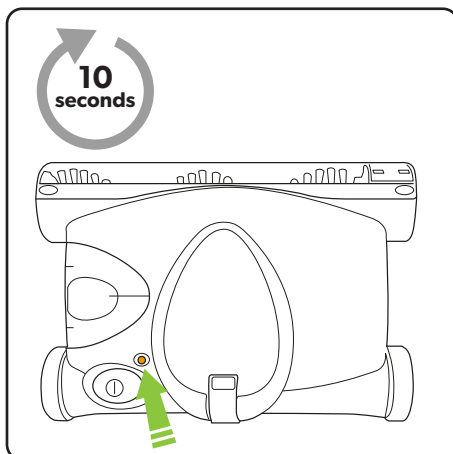
Use on stairs, starting at the top and front of each step then moving down and towards you.

Clearing the brush bar



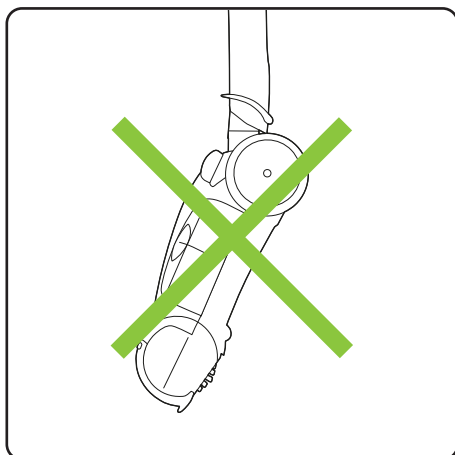
From time to time you may need to remove hair and thread from the brush bar. Take off visor and use a pair of scissors to remove the hair.

Brush bar jam



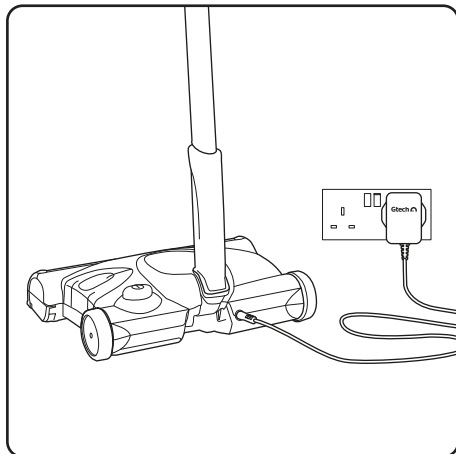
If the brush bar jams during use, the product will stop and the LED will flash orange. The product will not re-start until the LED stops flashing. This will take ten seconds. Clear any debris from the brush bar before re-starting.

Carrying

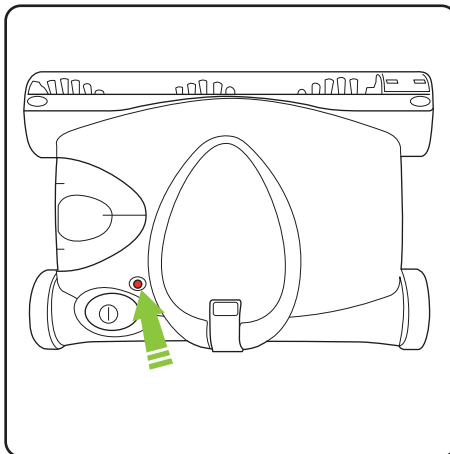


Try to avoid carrying the sweeper 'nose down' as you risk spilling dirt from the dust tray.

Recharging

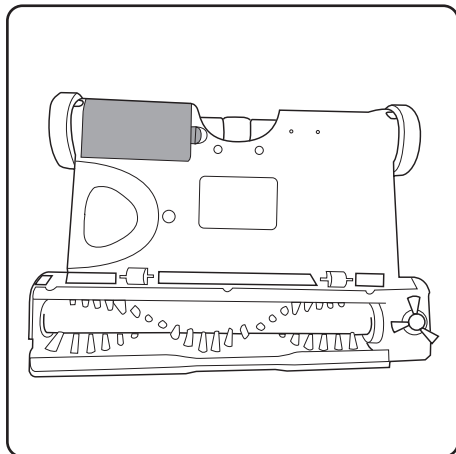


Plug in the charger and connect the jack to the socket at the rear of the sweeper. A full recharge will take 6 hours. Do not charge for longer than 24 hours.

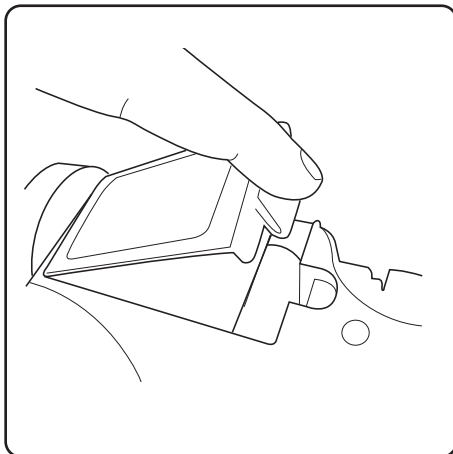


The LED shows red when charging starts, yellow when partially charged and green when fully charged. This takes around 6 hours. Once the battery is fully charged, switch the charger off at the mains. This will optimise the battery life.

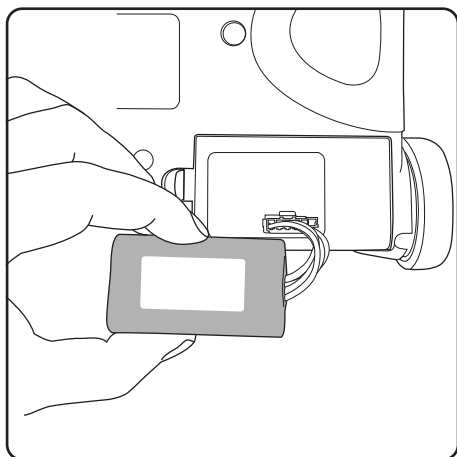
Changing the battery



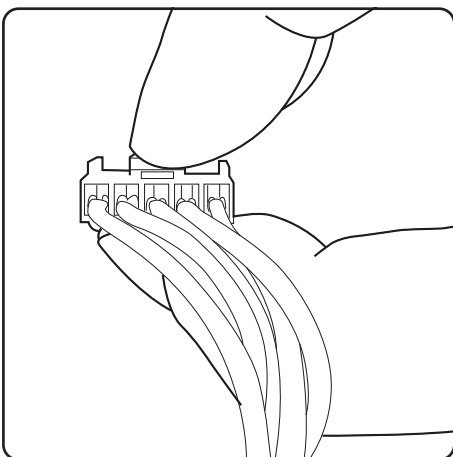
Locate the battery cover.



Lift off the battery cover.



Lift out the battery pack.



Remove the pad from the battery compartment then, pinching the clip, pull the 5-pin connector from the sweeper. Connect new battery, then replace pad and place new battery into compartment.

Product Care

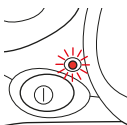
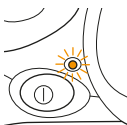
Your Gtech sweeper doesn't need much maintenance: empty the dust tray, remove hair and fibre from the brush bar and edge wheel and charge the battery. Wipe it with a dry cloth if it gets dirty, including in and around the bin. Never wash it with liquid or run it under a tap. Avoid cleaning over rug tassels or frayed carpets as this will tangle the brush bar. The battery, drive belt, brush bar and side brush are all replaceable items.

If you find you ever need to replace these items there is an FAQ section on our website at **www.gtech.co.uk**

To maintain optimum battery life store the battery in clean, dry conditions, within a recommended temperature range of 0 – 25°C. Do not store the battery in areas of high temperature above 25°C. Do not store near a source of heat or where exposed to direct sunlight.

If the product will be stored for longer periods of time without use it is recommended to fully charge the battery before storage to help maintain its condition and life.

Troubleshooting

Sweeper is not cleaning well		<ol style="list-style-type: none"> 1. Empty the bin. 2. Remove any build-up of hair from brush bar and edge wheel.
Sweeper has stopped or won't work - flashing red LED		<ol style="list-style-type: none"> 1. Fully recharge for 6 hours.
Sweeper has stopped or won't work - flashing orange LED		<ol style="list-style-type: none"> 1. The brush bar is blocked or jammed. 2. Clear debris from the brush bar (see p.8)
Battery will not charge		<ol style="list-style-type: none"> 1. Check the charger is correctly connected to the battery and mains supply 2. Check wall socket is switched on 3. Try another wall socket

Product support

If these initial tips do not solve your problem we please visit our support area where you can find troubleshooting help including online manuals, FAQs and how-to-videos, as well as genuine spares and replacement parts compatible with your product.

Visit: www.gtech.co.uk/support



Online



Live chat support



support@gtech.co.uk




How to Videos

SW02 TECHNICAL SPECIFICATION

Battery model	100A0050
Battery type	7.4V Li-Ion
Charging period for fully discharged battery	6 hours
Battery charger output	10V DC, 0.5A
Battery charger model	HCX0601-1000500B
Sound Level	75db (A)
Weight	1.6kg

Product recycling

Many of the electrical items that are thrown away can be repaired or recycled, saving natural resources and helping to protect the environment.

Gtech products are marked with the  symbol indicating they can be recycled, and are covered by legislation for Waste Electrical and Electronic Products (2012/19/EU)

When the product has reached the end of its life both it and the Li-Ion battery it contains should not be disposed of with general household waste. The battery should be removed from the product and both should be disposed of separately at a recognised recycling centre.

Recycling electrical products and batteries is free at your local recycling centre. To find your nearest centre and discover how easy it is to recycle electrical products visit www.recycle-more.co.uk Alternatively contact your local council or civic amenity site.



WARNING: Only use the charger supplied with the product.

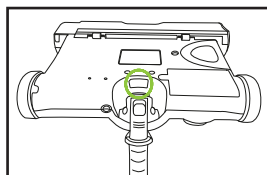
Using another charger may damage the product and the battery and will invalidate your guarantee.

FOR HOUSEHOLD USE ONLY

WARRANTY – REGISTRATION

Visit www.gtech.co.uk/warrantyregistration to register your product to ensure that we have all the information required to provide you with quick and efficient support.

You will need your product's serial code.



If you purchased directly from Gtech your details are already registered and your 2 year warranty will start automatically.

If you purchased from an authorised Gtech retailer, please register your warranty within 3 months and you will need to provide proof of purchase to support any claim against your warranty.

WARRANTY – TERMS AND CONDITIONS

If your product is within its warranty and has a fault that cannot be resolved from the troubleshooting section or online support, please do the following:

- Contact our Gtech Customer Care Helpline on UK: 08000 308 794, who will go through any troubleshooting with you to identify the fault.
- If your fault can be resolved by a replacement part, this will be sent to you free of charge.
- Following troubleshooting, if your product needs to be replaced, we will arrange collection of your faulty product for inspection, and delivery of a replacement product free of charge.

Your product is guaranteed against material or manufacturing faults for 2 years from the date of purchase (or the delivery date if this is later) subject to the following terms and conditions:

SUMMARY

The guarantee becomes effective at the date of purchase (or the date of delivery if this is later). If a product is repaired or replaced during the warranty period, the warranty period is not started again.

- You must provide proof of delivery/ purchase before any work can be carried out on the product. Without this proof, any work carried out will be chargeable. Please keep your receipt or delivery note.
- All work will be carried out by Gtech or its authorised agents.
- Any parts which are replaced will become the property of Gtech.
- The repair or replacement of your product is under guarantee and will not extend the period of guarantee.
- The guarantee provides benefits which are additional to and do not affect your statutory rights as a consumer.

WHAT ISN'T COVERED

Gtech does not guarantee the repair or replacement of a product as a result of:

- Normal wear and tear (e.g. drive belt, brush bar, batteries) .
- Use of consumables (e.g dust bags and cartridges)
- Accidental damage, faults caused by negligent use or lack of care and maintenance, misuse, neglect, careless operation or handling of the product which is not in accordance with operating manual.
- Blockages. Please refer to the operating manual for details of how to unblock your product.
- Use of the product for anything other than the normal domestic household purposes.
- Use of parts and accessories which are not Gtech genuine components.
- Faulty installation (except where installed by Gtech)
- If it is modified in any way.
- Repairs or alterations carried out by parties other than Gtech or its authorised agents.
- Purchasing your product from an unofficial third party (i.e not from Gtech or an official Gtech retailer.
- If you are in doubt as to what is covered by your guarantee, please call the Gtech Customer Care Helpline on UK: 08000 308 794

International orders are subject to a delivery charge for both faulty and non faulty products.

Notes



Grey Technology Limited

Brindley Road, Warndon, Worcester WR4 9FB, UK

email: support@gtech.co.uk

telephone: 08000 308 794

www.gtech.co.uk

5633 240702